

\$675,000 - 2055 Broadway # 307, Long Beach

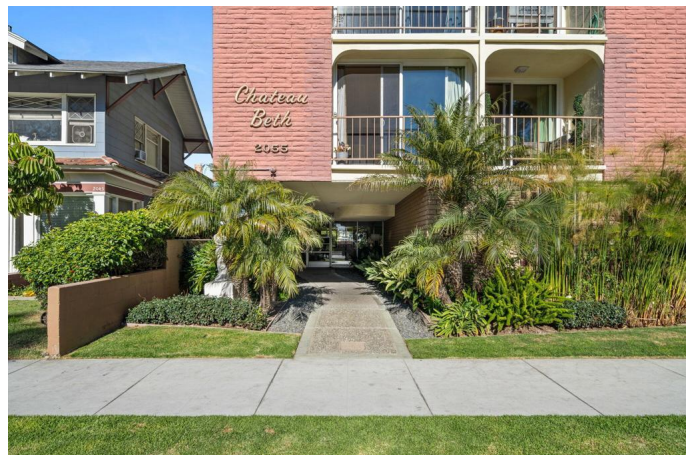
MLS® #219105293DA

\$675,000

2 Bedroom, 2.00 Bathroom, 1,197 sqft
Residential on 0 Acres

Not Applicable-1, Long Beach,

Fabulous location across from Bixby park and blocks from the beach! Light and bright 2BR/2BA, 3rd floor CORNER unit. 1 PARKING SPOT with storage locker. One of Long Beaches wonderful, walkable locations! Enjoy the fresh open-air breeze when you open the 3 large sliding doors in the spacious living/dining area to the private patio perched above Appleton Street. The updated kitchen has a wonderful deep stainless sink, glass cooktop and ample cabinetry to house your cookware. The 2 generous size bedrooms include a primary ensuite with great storage. Previous updates include kitchen cabinets, quartz counters, bath tile and sinks, and flooring. Double pane white vinyl windows. Chateau Beth faces Bixby park where you can shop the weekly Farmers Market, visit the dog park, or just take in the view. Along the waterfront you'll find walking and cycling paths, and plenty of shops and restaurants to visit along 4th Street. Units don't come available often in this quaint 24-unit building. Seller is motivated.



Built in 1970

Additional Information

City	Long Beach
County	Los Angeles
Zip	90803
MLS® #	219105293DA
Bedrooms	2

Bathrooms	2
Square Ft	1,197
Lot Size	0.31
Neighborhood	Not Applicable-1
Levels	One
Garages	1
HOA Dues	\$435
HOA Dues Freq.	Monthly

Listing Details

Listing Agent	Suzanne Fromm
Provided By:	HomeSmart

Based on information from California Regional Multiple Listing Service, Inc. as of May 10th, 2024 at 1:55pm PDT. This information is for your personal, non-commercial use and may not be used for any purpose other than to identify prospective properties you may be interested in purchasing. Display of MLS data is usually deemed reliable but is NOT guaranteed accurate by the MLS. Buyers are responsible for verifying the accuracy of all information and should investigate the data themselves or retain appropriate professionals. Information from sources other than the Listing Agent may have been included in the MLS data. Unless otherwise specified in writing, Broker/Agent has not and will not verify any information obtained from other sources. The Broker/Agent providing the information contained herein may or may not have been the Listing and/or Selling Agent.