

\$995,000 - 6000 Murphy Way, Malibu

MLS® #23232005

\$995,000

0 Bedroom, 0.00 Bathroom,
Land on 11 Acres

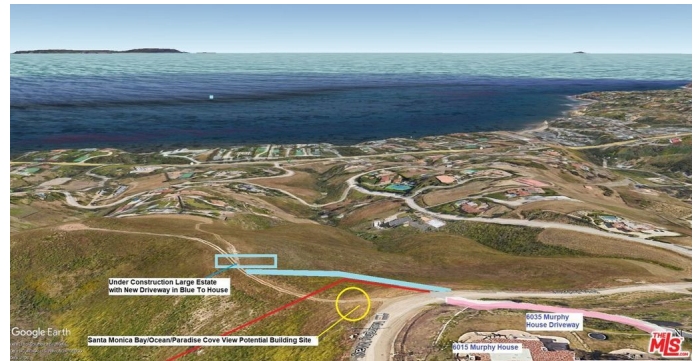
N/A, Malibu,

10.7 Acres In Malibu's Most Prestigious Areas

- Outstanding Ocean and Mountain views .

Adjacent Homes sell over \$10 million dollars .

Located only a mile from PCH and close to beach and shopping. Gentle down sloping property with perfect area to grade large flat building pad . Water and electricity fronts property. There are no reports or studies for this property . Adjacent lots have all sold over \$2m to \$5m. Tremendous Potential for Large Ocean View Estate! Best Lot Value in Malibu ! Go view anytime - easy to see.



Additional Information

City	Malibu
County	Los Angeles
Zip	90265
MLS® #	23232005
Lot Size	10.72
Neighborhood	N/A
HOA Dues	\$

Listing Details

Listing Agent	Bill Moss
Provided By:	Coldwell Banker Realty

Based on information from California Regional Multiple Listing Service, Inc. as of May 2nd, 2024 at 7:55am PDT. This information is for your personal, non-commercial use and may not be used for any purpose other than to identify prospective properties you may be interested in purchasing. Display of MLS data is usually deemed reliable but is NOT guaranteed accurate by the MLS. Buyers are responsible for verifying the accuracy of all information and should investigate the data themselves or retain appropriate professionals. Information from sources other than the Listing Agent may have been included in the MLS data. Unless otherwise specified in writing, Broker/Agent has not and will not

verify any information obtained from other sources. The Broker/Agent providing the information contained herein may or may not have been the Listing and/or Selling Agent.