

\$7,000 - 4316 Marina City Dr # 1033, Marina del Rey

MLS® #23295787

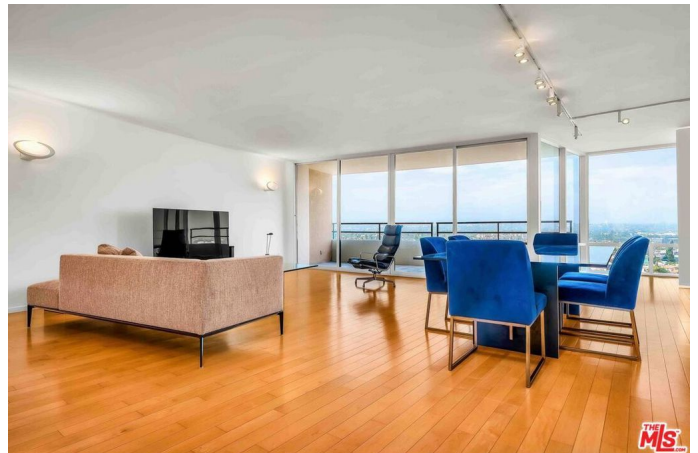
\$7,000

3 Bedroom, 2.00 Bathroom, 1,722 sqft

Residential Lease on 0 Acres

N/A, Marina del Rey,

Stunning urban resort condo in the Marina del Rey Harbor! Entering the door, a spectacular city, hills and distant mountain views with bright natural light and airy ocean breeze welcomes you. Beautiful three bed and two bath home remodeled by the famous architect Ted Tokio Tanaka offers an open concept floor plan with maple floors throughout the unit, floor-to-ceiling windows, and granite floors in entry. A freshly painted wide open living room with access to the huge balcony is ideal for relaxing and social gathering. Kitchen features ample cabinets with Bosch dishwasher & refrigerator along with LG built-in microwave and GE oven/range. The primary bedroom overlooking Oxford Basin features a remodeled bathroom with glass windows to enjoy the outside views. Both bathrooms have custom sinks and vanities which come with a heated INAX washlet seat with bidet. This end unit is on the 15th floor level located in the Center Tower of Marina City Club which has direct access to the Fitness Center and the Restaurant. Two side-by-side parking spots are on the street level close to the elevator for the residents. Marina City Club offers 24-hour security, Fitness Club with sauna, jacuzzi with steam room, 3 pools, 6 tennis courts, racquetball and paddle tennis courts. Fine dining restaurant, room service, beauty salon, on-site dry cleaning and car wash service! Just down the road from Marina del Rey Mother's Beach, the famous Abbott Kinney and Venice Canals, a lot of restaurants and shops.



Convenient location to the 90 and 405 freeways, and it only takes less than half an hour to LAX International Airport for both international & domestic travels. Your dream Marina life comes true.

Built in 1972

Additional Information

City	Marina del Rey
County	Los Angeles
Zip	90292
MLS® #	23295787
Bedrooms	3
Bathrooms	2
Square Ft	1,722
Lot Size	0.04
Neighborhood	N/A
Levels	One
Garages	2
HOA Dues	\$

Listing Details

Listing Agent	Hiroko Nishikawa Naumann
Provided By:	RE/MAX ESTATE PROPERTIES

Based on information from California Regional Multiple Listing Service, Inc. as of May 22nd, 2024 at 8:35am PDT. This information is for your personal, non-commercial use and may not be used for any purpose other than to identify prospective properties you may be interested in purchasing. Display of MLS data is usually deemed reliable but is NOT guaranteed accurate by the MLS. Buyers are responsible for verifying the accuracy of all information and should investigate the data themselves or retain appropriate professionals. Information from sources other than the Listing Agent may have been included in the MLS data. Unless otherwise specified in writing, Broker/Agent has not and will not verify any information obtained from other sources. The Broker/Agent providing the information contained herein may or may not have been the Listing and/or Selling Agent.