

# \$3,295,000 - 1954 Santiago Drive, Newport Beach

MLS® #NP22239534

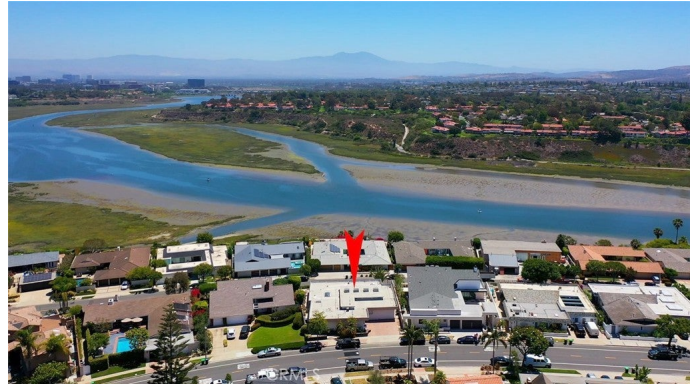
---

## \$3,295,000

5 Bedroom, 3.00 Bathroom, 3,540 sqft  
Residential on 0 Acres

Dover Shores (DSAM), Newport Beach,

Opportunity to remodel the existing home or build your dream home in the desirable Dover Shores neighborhood on this 10,752 sq ft lot with an expansive view of the Back Bay. Plans available for a contemporary masterpiece with an open floor plan and seamless indoor outdoor living. The proposed plans showcase a total of 5,138 sq ft of living space (4,330 sq. ft. main house and attached 808 sq. ft. ADU) with 5 generous bedrooms, all with ensuite bathrooms, plus the ADU. The first floor flows naturally to the outdoors with sliding glass doors, taking advantage of the bay breeze and view. Beyond the glass walls, find a covered deck with fireplace, BBQ area, and infinity edge pool/spa overlooking the Back Bay. Entertain effortlessly with the generous great room, dining area, and gourmet kitchen with a walk-in pantry. When it comes to extra space, this dream home has you covered with 2 main floor bedrooms easy to transform into a home office, gym, or game room. A state of the art elevator takes you to the second floor where you will find 2 additional bedrooms and a sweeping primary suite with incredible Back Bay views. The 2,445 sq ft second-floor deck will include an outdoor fireplace and kitchen, perfect for outdoor entertaining and enjoying the sunset. Additionally there is an ADU on this level with a separate staircase, living space, kitchenette, bedroom, full bath and a powder room. There is also a 4-car garage with supplementary courtyard and driveway parking. This is a rare opportunity to build your



dream home and customize the finishes or remodel the existing home to your taste.

Built in 1964

**Additional Information**

City	Newport Beach
County	Orange
Zip	92660
MLS® #	NP22239534
Bedrooms	5
Bathrooms	3
Square Ft	3,540
Lot Size	0.25
Neighborhood	Dover Shores (DSAM)
Levels	One
Garages	2
School District	Newport Mesa Unified
HOA Dues	\$1,220
HOA Dues Freq.	Annually

**Listing Details**

Listing Agent	Georgina Jacobson
Provided By:	Coldwell Banker Realty

Based on information from California Regional Multiple Listing Service, Inc. as of May 17th, 2024 at 3:35am PDT. This information is for your personal, non-commercial use and may not be used for any purpose other than to identify prospective properties you may be interested in purchasing. Display of MLS data is usually deemed reliable but is NOT guaranteed accurate by the MLS. Buyers are responsible for verifying the accuracy of all information and should investigate the data themselves or retain appropriate professionals. Information from sources other than the Listing Agent may have been included in the MLS data. Unless otherwise specified in writing, Broker/Agent has not and will not verify any information obtained from other sources. The Broker/Agent providing the information contained herein may or may not have been the Listing and/or Selling Agent.