

\$719,000 - 1050 Westward Lane # 25, Costa Mesa

MLS® #OC23085580

\$719,000

2 Bedroom, 3.00 Bathroom, 1,072 sqft
Residential on 0 Acres

Westbluff Village (WBVL), Costa Mesa,

Welcome to Westward In. An exquisitely remodeled end unit townhouse located in the highly desirable Westbluff Village Community. Walking distance distance to the Talbert Regional Nature Preserve, the Santa Ana Riverbed Trail, Canyon Park, and approximately two miles from the Huntington State Beach!

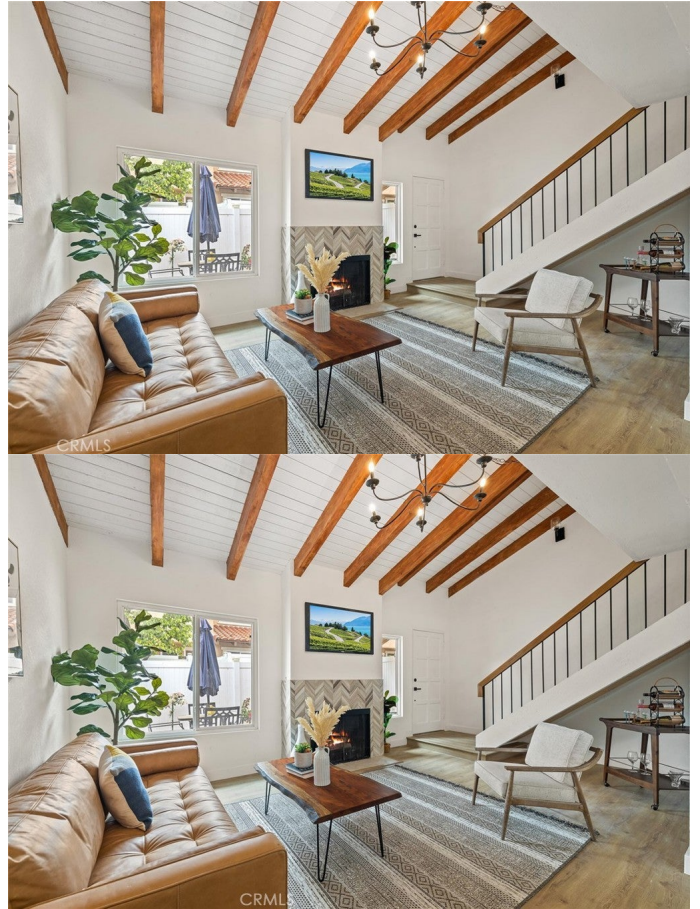
As you step inside, you are greeted by soaring vaulted ceilings adorned with beautiful rustic wood beams, an inviting living room with a cozy fireplace, and an abundance of natural light.

The living room flows seamlessly to a good size dining area right off of the remodeled kitchen.

The kitchen showcases new quartz countertops, a stylish backsplash, a new sink and faucets, new sleek stainless steel appliances, updated shaker-style cabinets with ample storage space, with convenient barstool seating. Plus, with direct access to your two car garage that has been freshly painted and features new epoxy flooring.

The main level also features a tastefully updated powder room, complete with a new vanity, toilet, lighting fixtures, and mirrors.

Upstairs, you will find two generously sized rooms.



The primary bedroom boasts the same high ceilings with wooden beams found on the lower level, a walk-in closet for all your storage needs, a private balcony, and a new unique dual quartz counter vanity with a sitting area so you can get ready for the day.

The second bathroom on the upper level has been beautifully remodeled. It showcases a new bathtub with exquisite tiling, new tile floors, a new vanity with a quartz countertop and backsplash, a new toilet, and a new lighting fixture.

Additional features of this exceptional townhouse include new water resistant laminate flooring, new baseboards, fresh paint, new lighting fixtures and new hardware.

Built in 1977

Additional Information

City	Costa Mesa
County	Orange
Zip	92627
MLS® #	OC23085580
Bedrooms	2
Bathrooms	3
Square Ft	1,072
Lot Size	0.00
Neighborhood	Westbluff Village (WBVL)
Levels	Two
Garages	2
School District	Newport Mesa Unified
HOA Dues	\$440
HOA Dues Freq.	Monthly

Listing Details

Listing Agent	Ari Mastorakis
---------------	----------------

Provided By: Coldwell Banker Realty

Based on information from California Regional Multiple Listing Service, Inc. as of May 2nd, 2024 at 5:25am PDT. This information is for your personal, non-commercial use and may not be used for any purpose other than to identify prospective properties you may be interested in purchasing. Display of MLS data is usually deemed reliable but is NOT guaranteed accurate by the MLS. Buyers are responsible for verifying the accuracy of all information and should investigate the data themselves or retain appropriate professionals. Information from sources other than the Listing Agent may have been included in the MLS data. Unless otherwise specified in writing, Broker/Agent has not and will not verify any information obtained from other sources. The Broker/Agent providing the information contained herein may or may not have been the Listing and/or Selling Agent.