

\$4,400 - 79 Waldorf, Irvine

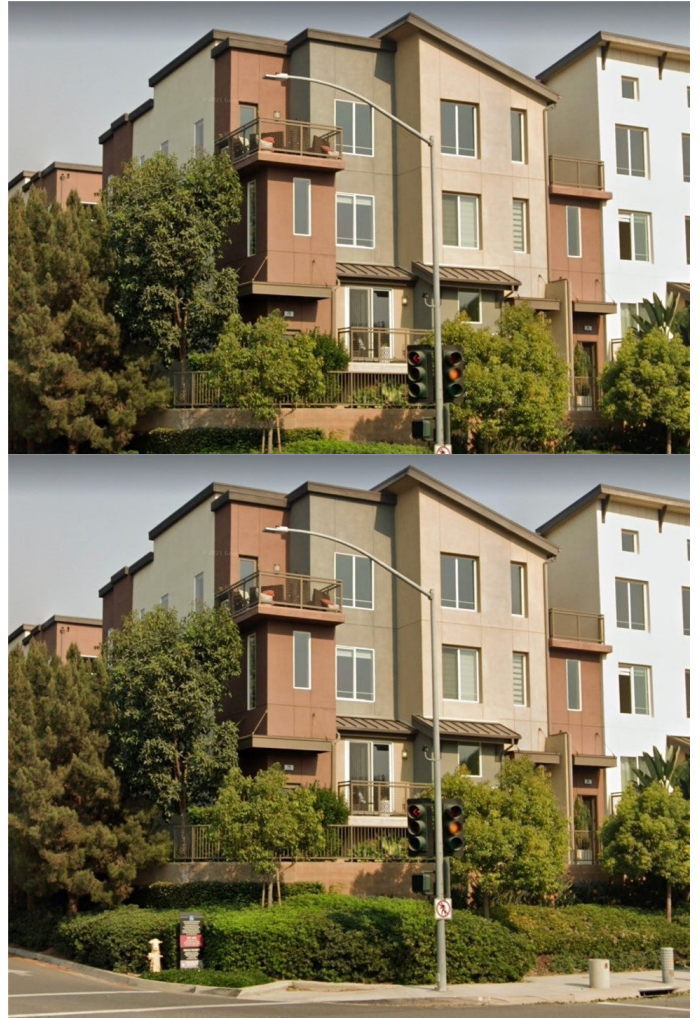
MLS® #OC23089176

\$4,400

2 Bedroom, 3.00 Bathroom, 1,814 sqft
Residential Lease on 0 Acres

Madison (CPWMD), Irvine,

This TURNKEY Tri-level Irvine townhome is ready for LEASE! Located in the Beautiful Madison neighborhood in the coveted Central Park West, this urban living home is ready to move in. This bright & charming townhome offers 2 beds, 2.5 baths with direct access to the generous 2 car garage. The open GREAT room welcomes you with soaring cathedral 20ft ceilings, 2 chandeliers & leads you to the Gourmet Kitchen with beautiful granite countertops with fully upgraded backsplash, huge center island, espresso sleek cabinets, a completely silent dishwasher to enjoy living space or do a load overnight without disruption & Stainless Steel appliances. The large upstairs loft leads you to your private patio deck that allows lots of natural lighting throughout with sprawling panoramic views. Dual Master suites that features a fully customized and modern built-in master walk-in closets & private bathrooms. Home features stunning modern floor tiles, plush carpet, recessed lighting, tankless water heater, custom paint, window treatments & top of the line inside laundry with full size large capacity washer and dryer! And this is pretty much the most private lot space for the townhomes with no adjacent neighboring windows or balconies in 2/3 of the home. Unobstructed views where you can see the beautiful sunset sky and fireworks on 4th of July! Centrally located in Irvine's financial district, near freeways and walking distance to shops, dining and many more! A MUST SEE!



Built in 2014

Additional Information

City	Irvine
County	Orange
Zip	92612
MLS® #	OC23089176
Bedrooms	2
Bathrooms	3
Square Ft	1,814
Lot Size	0.00
Neighborhood	Madison (CPWMD)
Levels	Three Or More
Garages	2
School District	Santa Ana Unified
HOA Dues	\$

Listing Details

Listing Agent	Stephanie Young
Provided By:	Coldwell Banker Realty

Based on information from California Regional Multiple Listing Service, Inc. as of May 2nd, 2024 at 8:15pm PDT. This information is for your personal, non-commercial use and may not be used for any purpose other than to identify prospective properties you may be interested in purchasing. Display of MLS data is usually deemed reliable but is NOT guaranteed accurate by the MLS. Buyers are responsible for verifying the accuracy of all information and should investigate the data themselves or retain appropriate professionals. Information from sources other than the Listing Agent may have been included in the MLS data. Unless otherwise specified in writing, Broker/Agent has not and will not verify any information obtained from other sources. The Broker/Agent providing the information contained herein may or may not have been the Listing and/or Selling Agent.