

# **\$999,000 - 7305 Marina Pacifica Drive, Long Beach**

MLS® #PW23067561

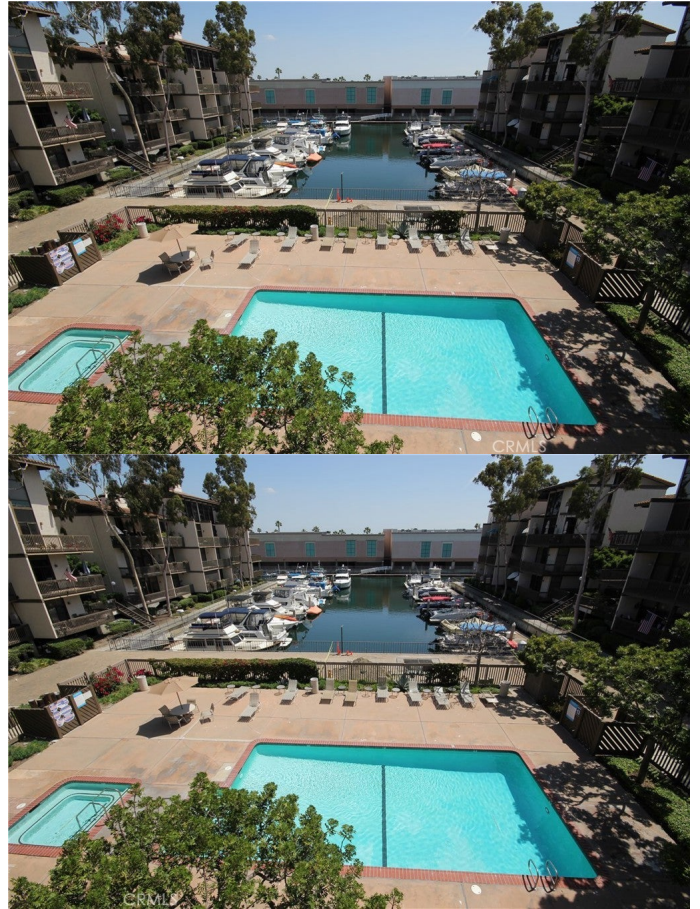
---

## **\$999,000**

3 Bedroom, 3.00 Bathroom, 1,852 sqft  
Residential on 22 Acres

Marina Pacifica (MRP), Long Beach,

Key 13! Enjoy the Spectacular views and Cool Ocean Breezes from your private balconies of this Stunning Resort style condominium. This spacious and bright turnkey condo is perfectly positioned in the highly desirable community of Marina Pacifica. Considered one of the best values in Southern California for waterfront living, this location has spectacular amenities including direct marina access for paddle boarding, boating and shopping. Natural sun and accompanying recessed lighting welcomes you from the moment you step inside. The upgraded kitchen with breakfast bar opens to the spacious stepdown living room overlooking the picturesque marina! Three generous bedrooms and three remodeled bathrooms provide ample living spaces. Additional upgrades include in unit laundry, central heat & air conditioning. This spacious top floor location with its panoramic views of the water is light and bright features beam ceilings with clerestory windows. This unique property is beautifully upgraded and must be seen to be appreciated. This spacious floor plan boasts 3 large bedrooms, 3 baths, inside laundry and 2 covered/assigned garage parking spaces. Monthly Association fees are \$868.00 & \$257.00. Marina Pacifica is a 24 hour guard gated waterfront community with 6 pools and spas, fitness center, clubhouse and 18 acres of manicured, resort-style landscaping. There is an attached Marina and a picturesque footbridge leading to shops, restaurants, theater and grocery and the new



2nd & PCH shopping center across the street.  
Marina Pacifica is just steps to public  
transportation and offers great walking, biking  
to nearby Seal Beach, Naples Island and  
Belmont Shore.

Built in 1974

### **Additional Information**

City	Long Beach
County	Los Angeles
Zip	90803
MLS® #	PW23067561
Bedrooms	3
Bathrooms	3
Square Ft	1,852
Lot Size	22.47
Neighborhood	Marina Pacifica (MRP)
Levels	Two, Three Or More
Garages	2
School District	Long Beach Unified
HOA Dues	\$868
HOA Dues Freq.	Monthly

### **Listing Details**

Listing Agent	Geary Smith
Provided By:	Vista Sotheby's Int'l Realty

Based on information from California Regional Multiple Listing Service, Inc. as of April 28th, 2024 at 7:35pm PDT. This information is for your personal, non-commercial use and may not be used for any purpose other than to identify prospective properties you may be interested in purchasing. Display of MLS data is usually deemed reliable but is NOT guaranteed accurate by the MLS. Buyers are responsible for verifying the accuracy of all information and should investigate the data themselves or retain appropriate professionals. Information from sources other than the Listing Agent may have been included in the MLS data. Unless otherwise specified in writing, Broker/Agent has not and will not verify any information obtained from other sources. The Broker/Agent providing the information contained herein may or may not have been the Listing and/or Selling Agent.