

\$1,500,000 - 13 Ebb Tide Circle, Newport Beach

MLS® #PW24037649

\$1,500,000

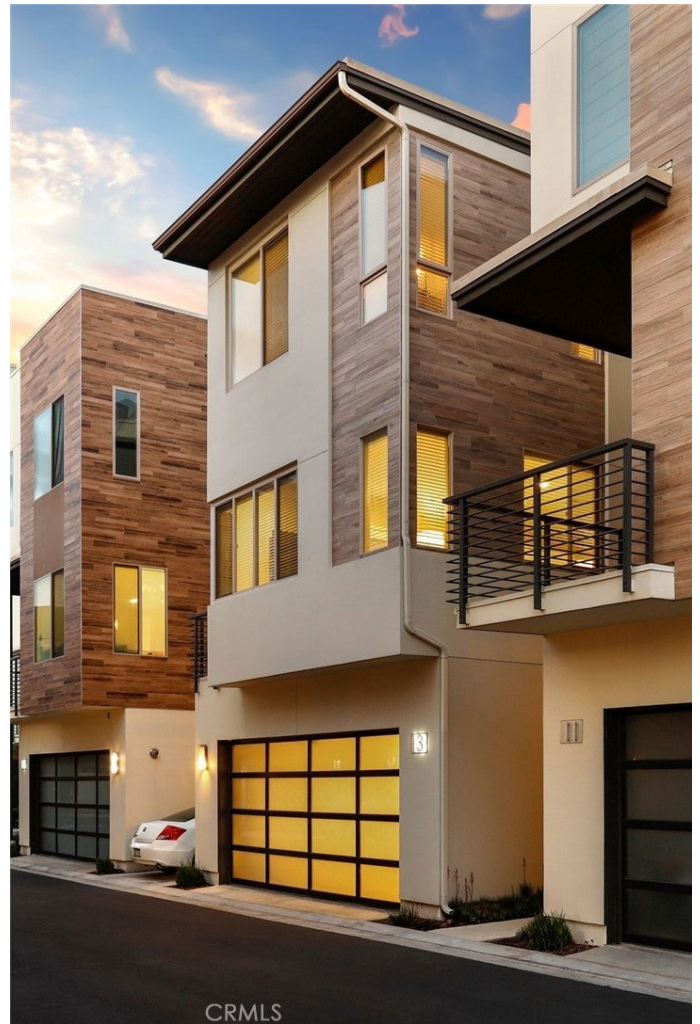
3 Bedroom, 4.00 Bathroom, 1,719 sqft
Residential on 0 Acres

Newport Heights (NEWH), Newport Beach,

Welcome to this modern coastal residence in the sought-after Ebb Tide community of Newport Beach. This newly constructed home seamlessly blends contemporary design, abundant natural light, and captivating views. The model-like property offers an array of desirable features, making it an ideal turn-key residence.

The home boasts a luminous and spacious interior adorned with high-end materials, fixtures, and appliances. The open-concept floor plan creates a welcoming living space, complemented by stunning sunset views from the expansive view from your very own private rooftop deck featuring a built-in barbecue. Boasting three en suite bedrooms, each with a private bath, and complemented by a powder room on the main living area. The en suite bedroom on the main level features its own private patio. This residence offers abundant space for both relaxation and entertainment. Indulge in the chef's ideal kitchen, complete with a spacious center island featuring a farmhouse sink and seating, exquisite white cabinetry, and top-notch stainless steel appliances. Every room is bathed in natural light from the expansive windows on all levels, crafting an inviting ambiance throughout the space. Step out onto the private outdoor patio for an optimal setting to soak up the Southern California sun.

Additional highlights include recessed lighting,



a laundry closet, generous storage space, and a two-car garage. Located just minutes from world-famous beaches, renowned restaurants, and premier shopping destinations like Fashion Island and South Coast Plaza, Segerstrom Center for the Arts, and minutes away from Balboa, Laguna and Huntington Beach. The community provides exceptional resort-style amenities, including a pool and spa, a BBQ area with outdoor dining space, and lounge chairs for residents to relax and embrace the unparalleled Newport Beach lifestyle. Welcome to a truly magnificent place to call home. Step into a genuinely extraordinary residence to call your own.

Built in 2017

Additional Information

City	Newport Beach
County	Orange
Zip	92663
MLS® #	PW24037649
Bedrooms	3
Bathrooms	4
Square Ft	1,719
Lot Size	0.02
Neighborhood	Newport Heights (NEWH)
Levels	Three Or More
Garages	2
School District	Newport Mesa Unified
HOA Dues	\$160
HOA Dues Freq.	Monthly

Listing Details

Listing Agent	Mary Ann Lawson
Provided By:	Redfin Corporation

Based on information from California Regional Multiple Listing Service, Inc. as of May 12th, 2024 at 8:50pm PDT. This information is for your personal, non-commercial use and may not be used for any purpose other than to identify prospective properties you may be interested in purchasing. Display of MLS data is usually deemed reliable but is NOT guaranteed accurate by the MLS. Buyers are responsible for verifying the accuracy of all information and should

investigate the data themselves or retain appropriate professionals. Information from sources other than the Listing Agent may have been included in the MLS data. Unless otherwise specified in writing, Broker/Agent has not and will not verify any information obtained from other sources. The Broker/Agent providing the information contained herein may or may not have been the Listing and/or Selling Agent.