

\$425,000 - (unit #e1604) 1255 Nuuanu Ave, Honolulu

MLS® #202408238

\$425,000

1 Bedroom, 1.00 Bathroom, 615 sqft
Condo / Townhouse on 5 Acres

DOWNTOWN, Honolulu, HI

Rare 1 bedroom with 2 covered parking stalls! Minutes away from Chinatown, restaurants, grocery stores, and more. The unit is ready for your personal touches, and the laundry room is just around the corner. Enjoy the lush recreation deck and take a dip in the on-site pool. Enjoy city living with 24-hour security and plenty of guest parking.

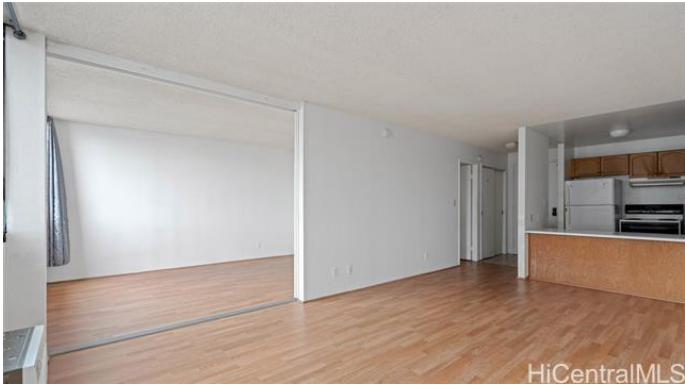
Built in 1976

Essential Information

MLS® #	202408238
Price	\$425,000
Bedrooms	1
Bathrooms	1.00
Full Baths	1
Square Footage	615
Acres	5.08
Year Built	1976
Type	Condo / Townhouse
Style	High-Rise 7+ Stories
Status	Active

Community Information

Address	(unit #e1604) 1255 Nuuanu Ave
Area	Metro
Subdivision	DOWNTOWN
City	Honolulu
State	HI



Zip Code 96817

Amenities

Amenities BBQ, Community Laundry, Pool, Recreation Area, Security Guard, Tennis Court, Walking/Jogging Path

Features Even# Unit, Single Level

Parking Spaces 2

Parking Assigned, Covered - 2

View City, Mountain, Ocean

Has Pool Yes

Exterior

Exterior Concrete

Additional Information

Date Listed April 15th, 2024

Days on Market 33

Listing Details

Listing Office eXp Realty

Based on information from the Multiple Listing Service of the HiCentral MLS®, Ltd. active listings last updated on May 18th, 2024 at 3:33pm PDT. Information is deemed reliable but not guaranteed. Copyright: 2024 by the HiCentral MLS®, Ltd. Listing information is provided exclusively for consumers' personal, non-commercial use and may not be used for any purpose other than to identify prospective properties consumers may be interested in purchasing. Some of the active listings appearing on this site may be listed by other REALTORS®. If you are interested in those active listings, our company may represent you as the buyer's agent. If the active listing you are interested in is our company's active listing, you may speak to one of our agents regarding your options for representation.