

\$5,925 - 675 9th Ave 2008,

MLS® #230024130

\$5,925

2 Bedroom, 2.00 Bathroom, 1,208 sqft
Rental

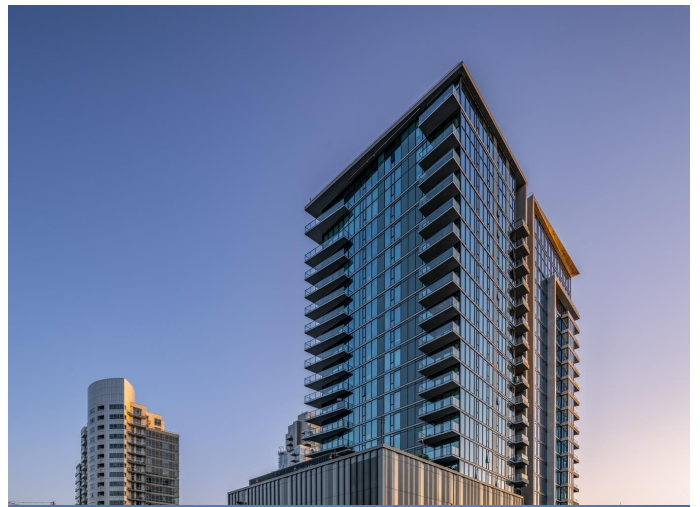
Ballpark District, , CA

Introducing Radian, the epitome of luxury living in downtown San Diego's Ballpark District. With a prime location just 2 blocks north of Petco Park, this 22-story high-rise offers over 240 available exquisite 1-3 bedroom units and penthouse suites, starting from \$3,000.

Imagine waking up to panoramic views of the city and Petco Park, with the sun cascading through floor-to-ceiling windows onto your Italian cabinetry kitchen. This is the reality at Radian, a 22-story luxury apartment oasis in the heart of San Diego's thriving Ballpark District. Radian's allure lies in its unparalleled 360° views, striking interiors, environmentally conscious design and engaging social spaces.

Each residence is a testament to modern luxury, featuring floor-to-ceiling windows, Italian kitchen cabinetry, waterfall quartz countertops, walk-in closets, lit mirror bathroom vanities, built-in quartz countertop desks, and luxury smart appliances. Beyond the lavish interiors, Radian boasts an impressive array of community amenities. Residents can bask on the rooftop, which has direct views into Petco Park's stadium, at the resort-style pool with cabanas, savor the rooftop BBQs and pizza oven, or make use of the clubhouse with a remote work suite.

Fitness enthusiasts will appreciate the indoor/outdoor fitness center and yoga room, while pet owners will delight in the barc parc and dog spa. With private access to the community and parking garage, convenience is paramount. *Prices and amenities vary per



unit. Please consult the onsite agent for details on the unit in question.

Built in 2023

Additional Information

County	San Diego
Zip	92101
MLS® #	230024130
Bedrooms	2
Bathrooms	2
Square Ft	1,208
Neighborhood	SAN DIEGO DOWNTOWN (92101)

Listing Details

Provided By: Compass

This information is deemed reliable but not guaranteed. You should rely on this information only to decide whether or not to further investigate a particular property. BEFORE MAKING ANY OTHER DECISION, YOU SHOULD PERSONALLY INVESTIGATE THE FACTS (e.g. square footage and lot size) with the assistance of an appropriate professional. You may use this information only to identify properties you may be interested in investigating further. All uses except for personal, non-commercial use in accordance with the foregoing purpose are prohibited. Redistribution or copying of this information, any photographs or video tours is strictly prohibited. This information is derived from the Internet Data Exchange (IDX) service provided by San Diego MLS®. Displayed property listings may be held by a brokerage firm other than the broker and/or agent responsible for this display. The information and any photographs and video tours and the compilation from which they are derived is protected by copyright. Compilation © 2024 San Diego MLS®, Inc. Listing information last updated on May 16th, 2024 at 7:19am PDT