

\$1,240,000 - 800 The Mark Ln 1501, DOWNTOWN

MLS® #240004083

\$1,240,000

2 Bedroom, 2.00 Bathroom, 1,324 sqft
Residential on 1 Acres

East Village, DOWNTOWN, CA

Welcome to The Mark in East Village â€” a refined living space offering panoramic views of the city, Coronado Bridge, glimpses of Petco Park, and water views from the living room, balcony, and primary bedroom. This tastefully decorated property is furnished, featuring a thoughtfully designed entertainer's kitchen with a separate bar area, complete with a wine fridge.

Built in 2007

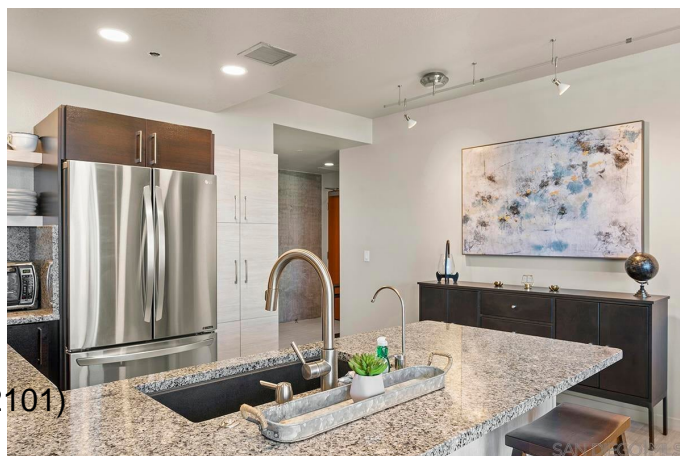
Additional Information

City	DOWNTOWN
County	San Diego
Zip	92101
MLS® #	240004083
Bedrooms	2
Bathrooms	2
Square Ft	1,324
Lot Size	1.38
Neighborhood	SAN DIEGO DOWNTOWN (92101)
Garages	2

Listing Details

Provided By: Whelan Properties

This information is deemed reliable but not guaranteed. You should rely on this information only to decide whether or not to further investigate a particular property. BEFORE MAKING ANY OTHER DECISION, YOU SHOULD PERSONALLY INVESTIGATE THE FACTS (e.g. square footage and lot size) with the assistance of an appropriate professional. You may use this information only to identify properties you may be interested in investigating further. All uses except for personal, non-commercial use in accordance with the foregoing purpose are prohibited. Redistribution or copying of this information, any photographs or video tours is strictly prohibited. This information is derived from the Internet Data



Exchange (IDX) service provided by San Diego MLS®. Displayed property listings may be held by a brokerage firm other than the broker and/or agent responsible for this display. The information and any photographs and video tours and the compilation from which they are derived is protected by copyright. Compilation © 2024 San Diego MLS®, Inc. Listing information last updated on May 11th, 2024 at 9:16pm PDT