

# \$1,149,000 - 4146-48 Eta St, SAN DIEGO

MLS® #240006818

**\$1,149,000**

4 Bedroom, 2.00 Bathroom,  
Residential Income on 0 Acres

Shelltown, SAN DIEGO, CA

Refreshed Duplex with interior upgrades .  
Units have large living area and the  
convenience of 2 assigned off-street parking  
spots, and private backyards. Each unit comes  
equipped with washer and dryer. Perfect  
location for multiple transit options and access  
to all freeways. Don't miss out on this  
exceptional opportunity to have an investment  
or call this place your own!

Built in 1930

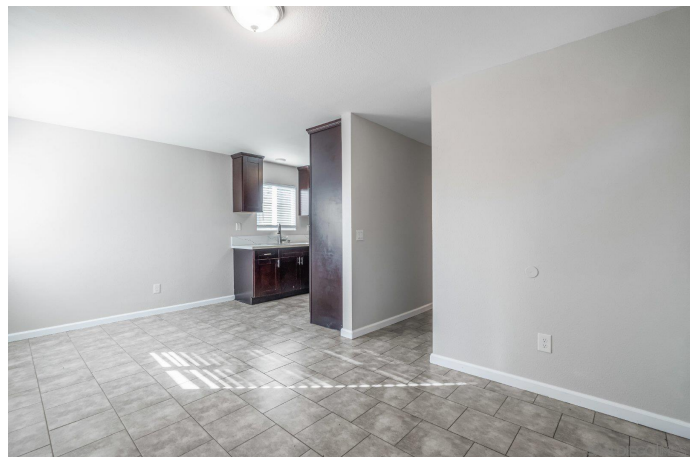
## Additional Information

City	SAN DIEGO
County	San Diego
Zip	92113
MLS® #	240006818
Bedrooms	4
Bathrooms	2
Lot Size	0.00
Neighborhood	LOGAN HEIGHTS (92113)

## Listing Details

Provided By: McDade Realty Group

This information is deemed reliable but not guaranteed. You should rely on this information only to decide whether or not to further investigate a particular property. BEFORE MAKING ANY OTHER DECISION, YOU SHOULD PERSONALLY INVESTIGATE THE FACTS (e.g. square footage and lot size) with the assistance of an appropriate professional. You may use this information only to identify properties you may be interested in investigating further. All uses except for personal, non-commercial use in accordance with the foregoing purpose are prohibited. Redistribution or copying of this information, any photographs or video tours is strictly prohibited. This information is derived from the Internet Data Exchange (IDX) service provided by San Diego MLS®. Displayed property listings may be held by a brokerage firm other than the broker and/or agent responsible for this display. The information and any photographs and video tours



and the compilation from which they are derived is protected by copyright. Compilation © 2024 San Diego MLS® Inc.  
Listing information last updated on May 18th, 2024 at 3:46pm PDT