

\$950 - 2621 S Erin Way,

MLS® #EV24058716

\$950

1 Bedroom, 1.00 Bathroom, 600 sqft
Rental

N/A, , CA

Available for immediate move-in! Single room in a beautiful 2 story home. This home is located near Loma Linda Hospital, Medical Center, Parks, and schools. You will love the bright and open living room complete with cozy fireplace. The kitchen and dining area are open to one of the many living areas. This home is completely furnished with stove, refrigerator, washer & dryer, and spacious back yard. This room is ideal for students as it is located near Loma Linda medical center.

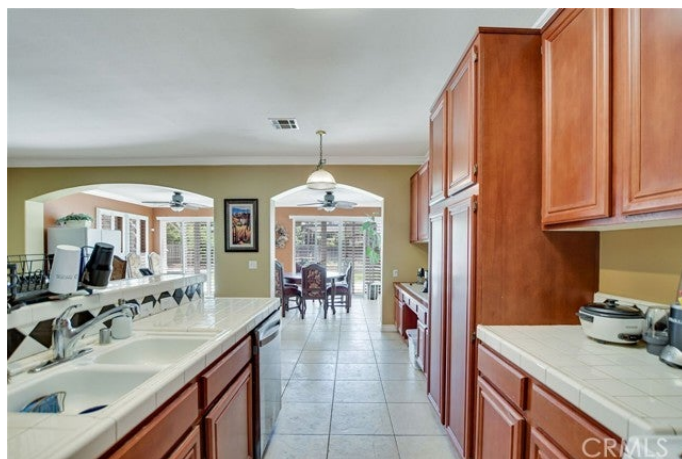
Additional Information

County	San Bernardino
Zip	92408
MLS® #	EV24058716
Bedrooms	1
Bathrooms	1
Square Ft	600
Neighborhood	SAN BERNARDINO (92408)
Garages	2

Listing Details

Provided By: RE/MAX ADVANTAGE

This information is deemed reliable but not guaranteed. You should rely on this information only to decide whether or not to further investigate a particular property. BEFORE MAKING ANY OTHER DECISION, YOU SHOULD PERSONALLY INVESTIGATE THE FACTS (e.g. square footage and lot size) with the assistance of an appropriate professional. You may use this information only to identify properties you may be interested in investigating further. All uses except for personal, non-commercial use in accordance with the foregoing purpose are prohibited. Redistribution or copying of this information, any photographs or video tours is strictly prohibited. This information is derived from the Internet Data Exchange (IDX) service provided by San Diego MLS®. Displayed property listings may be held by a brokerage firm



other than the broker and/or agent responsible for this display. The information and any photographs and video tours and the compilation from which they are derived is protected by copyright. Compilation © 2024 San Diego MLS® Inc. Listing information last updated on May 9th, 2024 at 4:32pm PDT