

\$7,900,000 - 25080 Juniper Flats,

MLS® #LG20034756

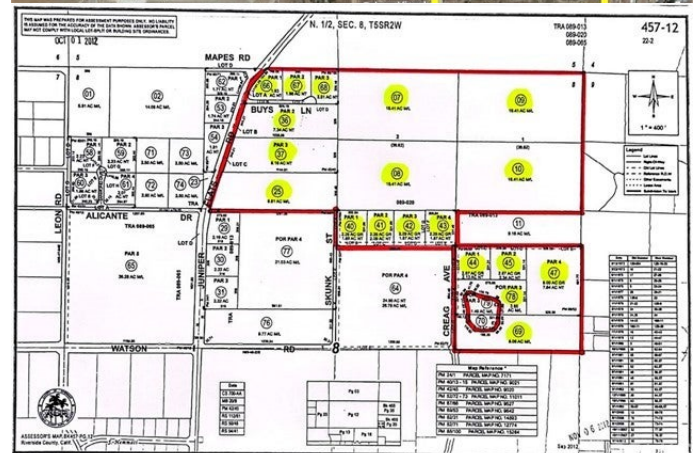
\$7,900,000

Bedroom, Bathroom, 6,040,029 sqft

Lot / Land on 139 Acres

N/A, , CA

138.66 +- acres of rural residential land with a ranch home, in southwest Riverside County. Located centrally in the unincorporated area of Homeland, between San Jacinto and Menifee Valley's. Nineteen separate parcels primed for a new home tract or a horse ranch. This area is growing rapidly. New housing desperately needed! Expired tentative tract map was submitted in 2014, consisting of 176 HOMES on 101 ACRES with 8,000+- sq. ft. lots. There is a potential to develop 200+ homes. Property is currently used as a tranquil getaway. Outbuildings, multiple fruit trees, a working TAX DEDUCTIBLE VINEYARD, and four (4) water wells make this property sustainable. 19 PARCELS included in this package. Use the complete 19 parcels for your new home project or resale additional parcels for development costs of smaller project. Must see this growing area. Redevelopment, commercial, medical facilities, shopping centers and a huge amount of industrial buildings are surrounding this area. Close to the prestigious gated community of Sky Mesa Ranches off Juniper Flats Rd to the North, which is a HOA with five (5) acre custom homes with more homes currently in the planning stages. Minutes to Lake Perris for fishing and boating entertainment! Close to the I-215, Ramona Expressway and Hwy's 74 & 79 for easy commute. Great builders investment opportunity!



Additional Information

County	Riverside
Zip	92548
MLS® #	LG20034756
Square Ft	6,040,029
Lot Size	138.66
Neighborhood	RIV CTY-HOMELAND (92548)

Listing Details

Provided By: Re/Max One

This information is deemed reliable but not guaranteed. You should rely on this information only to decide whether or not to further investigate a particular property. BEFORE MAKING ANY OTHER DECISION, YOU SHOULD PERSONALLY INVESTIGATE THE FACTS (e.g. square footage and lot size) with the assistance of an appropriate professional. You may use this information only to identify properties you may be interested in investigating further. All uses except for personal, non-commercial use in accordance with the foregoing purpose are prohibited. Redistribution or copying of this information, any photographs or video tours is strictly prohibited. This information is derived from the Internet Data Exchange (IDX) service provided by San Diego MLS®. Displayed property listings may be held by a brokerage firm other than the broker and/or agent responsible for this display. The information and any photographs and video tours and the compilation from which they are derived is protected by copyright. Compilation © 2024 San Diego MLS®, Inc. Listing information last updated on May 30th, 2024 at 6:34pm PDT