

\$150,000 - 22975 Sky Mesa,

MLS® #LG21013286

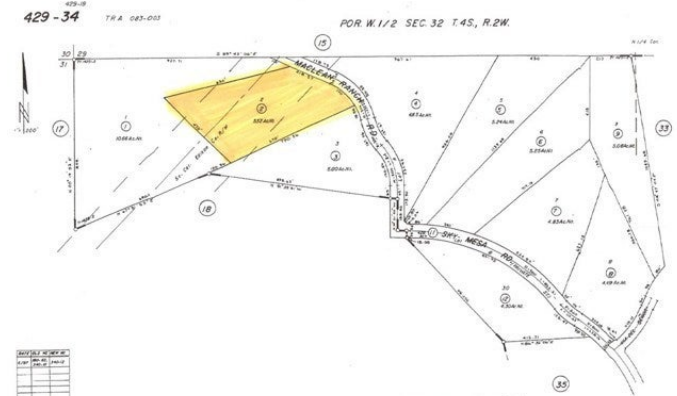
\$150,000

Bedroom, Bathroom, 240,451 sqft

Lot / Land on 6 Acres

Sky Mesa, , CA

FIVE & ONE-HALF+- (5.52) VIEW ACRES in "THE RANCH at SKY MESA", a private, gated, HOA Community in the hills above Menifee Valley, in Southwestern Riverside County, CA. LOT 2, TRACT 2. South (Main) & North gates equipped with high-tech, security, recording cameras. Buzz in guests. This gated 500 acre community has 77 lots and min. (5) acre+- lots. 2,800 sq ft + homes with 3 + car garages. NO mobile homes protects your valuable equity. Propane & septic tank area. District water. Utilities in paved street. 218' FRONTAGE. 470' rear boundary. 630' N. & 670' S. Pad plotted on site map. Fire hydrant letter. Corners reconfirmed. Four horses allowed. Common area with a great horse arena. At 2,500'+ elevation you and your family can enjoy fresh air, nice breezes and even occasional snow flurries. Natural habitat with amazing rock outcroppings. Private yet close to services & access to I-215, Hwy 74, realigned 79 & Ramona Expressway. 1 of 10 lots. Package incentive available - builder/developer opportunity. OWNER MAY CARRY!



Additional Information

County	Riverside
Zip	92548
MLS® #	LG21013286
Square Ft	240,451

Lot Size	5.52
Neighborhood	RIV CTY-HOMELAND (92548)

Listing Details

Provided By: Re/Max One

This information is deemed reliable but not guaranteed. You should rely on this information only to decide whether or not to further investigate a particular property. BEFORE MAKING ANY OTHER DECISION, YOU SHOULD PERSONALLY INVESTIGATE THE FACTS (e.g. square footage and lot size) with the assistance of an appropriate professional. You may use this information only to identify properties you may be interested in investigating further. All uses except for personal, non-commercial use in accordance with the foregoing purpose are prohibited. Redistribution or copying of this information, any photographs or video tours is strictly prohibited. This information is derived from the Internet Data Exchange (IDX) service provided by San Diego MLS®. Displayed property listings may be held by a brokerage firm other than the broker and/or agent responsible for this display. The information and any photographs and video tours and the compilation from which they are derived is protected by copyright. Compilation © 2024 San Diego MLS®, Inc. Listing information last updated on May 16th, 2024 at 8:16pm PDT