

# \$7,500,000 - 16800 State Highway 14,

MLS® #OC22259540

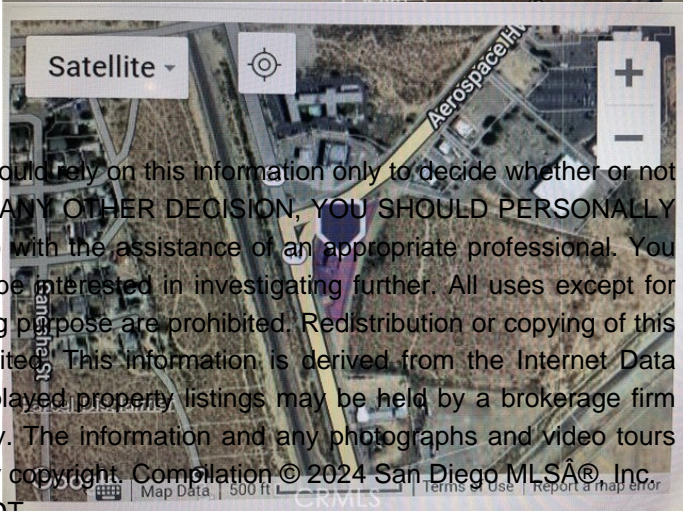
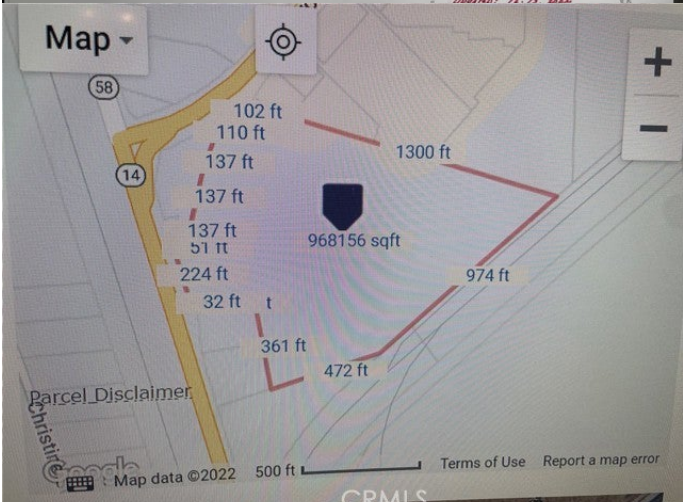
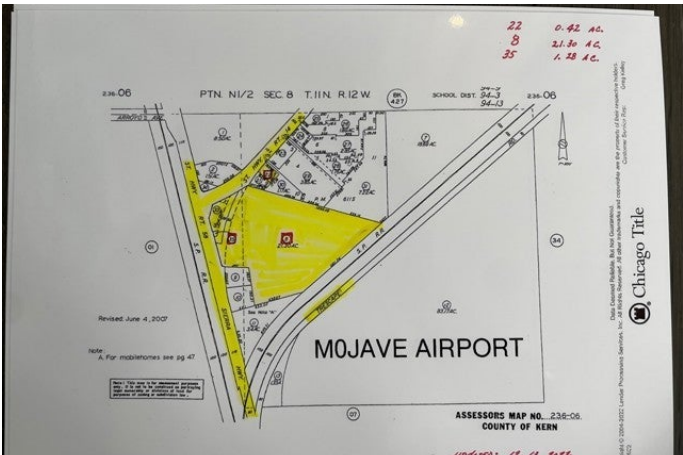
**\$7,500,000**

Bedroom, Bathroom, 927,828 sqft

Lot / Land on 21 Acres

AIRPORT, , CA

LOCATED ON THE CORNER OF STATE HWY. 14 AND STATE HWY. 58, ONE OF THE BEST LOCATIONS AVAILABLE TODAY. PLEASE REVIEW MAP. ZONED:M-2 PD H F



## Additional Information

County	Kern
Zip	93501
MLS® #	OC22259540
Square Ft	927,828
Lot Size	21.30
Neighborhood	MOJAVE (93501)

## Listing Details

Provided By: Privacy Real Estate Services

This information is deemed reliable but not guaranteed. You should rely on this information only to decide whether or not to further investigate a particular property. BEFORE MAKING ANY OTHER DECISION, YOU SHOULD PERSONALLY INVESTIGATE THE FACTS (e.g. square footage and lot size) with the assistance of an appropriate professional. You may use this information only to identify properties you may be interested in investigating further. All uses except for personal, non-commercial use in accordance with the foregoing purpose are prohibited. Redistribution or copying of this information, any photographs or video tours is strictly prohibited. This information is derived from the Internet Data Exchange (IDX) service provided by San Diego MLSA®. Displayed property listings may be held by a brokerage firm other than the broker and/or agent responsible for this display. The information and any photographs and video tours and the compilation from which they are derived is protected by copyright. Compilation © 2024 San Diego MLSA® Inc. Listing information last updated on May 9th, 2024 at 8:17am PDT