

# \$9,200,000 - 216 Kings Place, Newport Beach

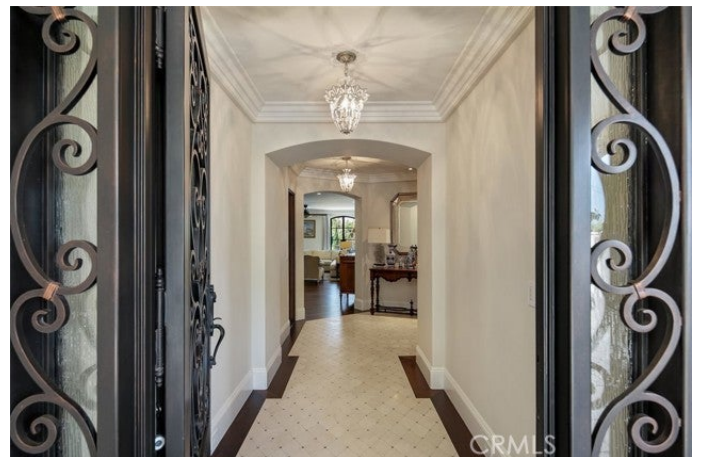
MLS® #OC24007450

**\$9,200,000**

4 Bedroom, 6.00 Bathroom, 8,498 sqft  
Residential on 0 Acres

N/A, Newport Beach, CA

Nestled in the prestigious neighborhood of Cliffhaven sits this meticulously crafted 5,400+ sq ft home showcasing only the finest features. As you approach the residence, its captivating facade presents a harmonious fusion of timeless traditional elements and contemporary architectural design. The well thought out living space leaves no detail overlooked featuring rich hardwood flooring, bright natural light, and a warm fireplace that serves as the heart of the room. The gourmet chef's kitchen features top-of-the-line stainless steel appliances, custom cabinetry, and a sprawling center island that effortlessly combines style and functionality. Unwind in the generously sized luxurious primary suite, complemented by a cozy fireplace adding an extra touch of warmth. The spa-like bathroom is a true work of art, boasting a deep tub, a rainfall shower head, dual vanities, and exquisite marble finishes, complete with a spacious walk-in closet. Each of the remaining bedrooms is equally impressive, showcasing its own unique charm and en-suite bathroom. The property also boasts a remarkable 3,000+ sq ft "man cave," located within the expansive 3-car garage that can accommodate up to 10 cars. This versatile space presents limitless possibilities, whether you envision transforming it into a state-of-the-art home theater or creating a golf simulator to perfect your swing. Beyond the interior, the outdoor areas provide its own realm of luxury. Delight in the meticulously landscaped backyard, a



serene oasis boasting a pool, spa, and a covered patio area ideal for al fresco dining. Offering

Built in 2014

**Additional Information**

City	Newport Beach
County	Orange
Zip	92663
MLS® #	OC24007450
Bedrooms	4
Bathrooms	6
Square Ft	8,498
Lot Size	0.25
Neighborhood	OC - NEWPORT BEACH (92663)
Garages	10

**Listing Details**

Provided By: Douglas Elliman of California

This information is deemed reliable but not guaranteed. You should rely on this information only to decide whether or not to further investigate a particular property. BEFORE MAKING ANY OTHER DECISION, YOU SHOULD PERSONALLY INVESTIGATE THE FACTS (e.g. square footage and lot size) with the assistance of an appropriate professional. You may use this information only to identify properties you may be interested in investigating further. All uses except for personal, non-commercial use in accordance with the foregoing purpose are prohibited. Redistribution or copying of this information, any photographs or video tours is strictly prohibited. This information is derived from the Internet Data Exchange (IDX) service provided by San Diego MLS®. Displayed property listings may be held by a brokerage firm other than the broker and/or agent responsible for this display. The information and any photographs and video tours and the compilation from which they are derived is protected by copyright. Compilation © 2024 San Diego MLS®, Inc. Listing information last updated on May 8th, 2024 at 10:47pm PDT