

\$15,900,000 - 2400 Inverness Avenue, Los Angeles

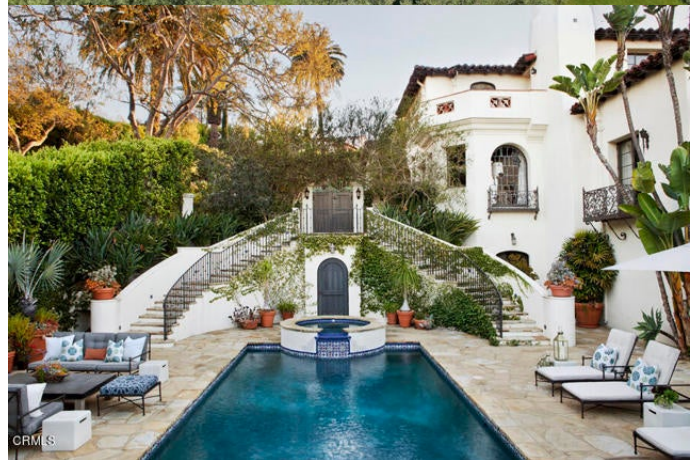
MLS® #P1-16954

\$15,900,000

6 Bedroom, 11.00 Bathroom, 11,129 sqft
Residential on 1 Acres

N/A, Los Angeles, CA

A once in a lifetime opportunity to own one of the most prominent LA estates. The opulent Oliver R. Fuller Estate, a Spanish Colonial Revival, shielded by refined wrought iron gates, was envisioned by the renowned architect Harry Hayden Whiteley, AIA, in 1929. The driveway is a private and elegant pathway to the estate's entrance. Seamlessly combining the grandeur of a classic Mediterranean estate with the enchantment of old Hollywood allure, the estate and its guest house sit on over 39,000 feet of lush grounds. Offering six bedrooms and 11 bathrooms, the estate proudly occupies an LA footprint alongside the Griffith Observatory with stunning panoramic views that extend across the LA basin and beyond. The two-story rotunda-style entry with hand-painted artistry, a ceiling that casts an enduring charm, and a sweeping staircase that evokes the nostalgia of a bygone era are just the beginning. The Baronial step-down living room, with an ornate fireplace and unique detail, opens to French doors revealing a balcony that overlooks the pool, spa, and city of Los Angeles. The light-filled library adds to the property's allure with a honeycombed coiffured ceiling, stained glass, fireplace, and a Prohibition-style hidden bar. The large dining room captures the city views and boasts a hand-stenciled wood ceiling and glass doors to a covered veranda--where one secretly enjoys the city below and the warmth of a crackling fireplace behind. The massive cook's kitchen, complete



with a Butler's pantry, commercial-grade appliances, and an oversized island, adds a touch of modern convenience.

Built in 1929

Additional Information

City	Los Angeles
County	Los Angeles
Zip	90027
MLS® #	P1-16954
Bedrooms	6
Bathrooms	11
Square Ft	11,129
Lot Size	0.90
Neighborhood	LOS ANGELES (90027)
Garages	4

Listing Details

Provided By: The Agency

This information is deemed reliable but not guaranteed. You should rely on this information only to decide whether or not to further investigate a particular property. BEFORE MAKING ANY OTHER DECISION, YOU SHOULD PERSONALLY INVESTIGATE THE FACTS (e.g. square footage and lot size) with the assistance of an appropriate professional. You may use this information only to identify properties you may be interested in investigating further. All uses except for personal, non-commercial use in accordance with the foregoing purpose are prohibited. Redistribution or copying of this information, any photographs or video tours is strictly prohibited. This information is derived from the Internet Data Exchange (IDX) service provided by San Diego MLS®. Displayed property listings may be held by a brokerage firm other than the broker and/or agent responsible for this display. The information and any photographs and video tours and the compilation from which they are derived is protected by copyright. Compilation © 2024 San Diego MLS®, Inc. Listing information last updated on May 14th, 2024 at 12:36pm PDT