

\$9,500,000 - Indian,

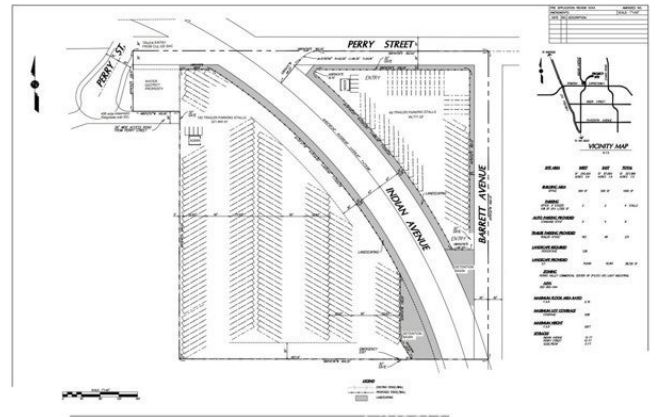
MLS® #SW23217323

\$9,500,000

Bedroom, Bathroom, 326,700 sqft
Lot / Land on 8 Acres

N/A, , CA

Price Reduced! Prime Investment Opportunity with High Potential Cap Rate! Unlock the potential of this strategically positioned 7.5-acre parcel in Perris, CA. Currently undergoing the addition of a Conditional Use Permit (CUP) for a Truck Parking Terminal, this light industrial zoned property is poised to deliver a remarkable 7.5% potential cap rate. Strategically nestled amidst industry giants like Amazon and Lowes, this property offers an exceptional opportunity to tap into the burgeoning logistics sector. With plans for a Truck Parking Terminal accommodating up to 231 trailer parking spaces, seize the chance to be at the forefront of this rapidly developing area. Enjoy seamless connectivity to major transportation arteries, including I-215, I-60, I-10 & I-15 Freeways, ensuring effortless access for transportation and logistics operations. Don't let this opportunity slip away. Act swiftly to explore potential incentives for a prompt closing. Secure your position in this thriving market today and pave the way for a prosperous future. Contact us now to learn more and make this investment yours.



Additional Information

County	Riverside
Zip	92571
MLS® #	SW23217323
Square Ft	326,700

Lot Size	7.50
Neighborhood	RIV CTY-PERRIS (92571)

Listing Details

Provided By: 1st American Realty

This information is deemed reliable but not guaranteed. You should rely on this information only to decide whether or not to further investigate a particular property. BEFORE MAKING ANY OTHER DECISION, YOU SHOULD PERSONALLY INVESTIGATE THE FACTS (e.g. square footage and lot size) with the assistance of an appropriate professional. You may use this information only to identify properties you may be interested in investigating further. All uses except for personal, non-commercial use in accordance with the foregoing purpose are prohibited. Redistribution or copying of this information, any photographs or video tours is strictly prohibited. This information is derived from the Internet Data Exchange (IDX) service provided by San Diego MLS®. Displayed property listings may be held by a brokerage firm other than the broker and/or agent responsible for this display. The information and any photographs and video tours and the compilation from which they are derived is protected by copyright. Compilation © 2024 San Diego MLS®, Inc. Listing information last updated on May 9th, 2024 at 1:15am PDT