

\$325,000 - 22817 Laurel Lane, Crestline

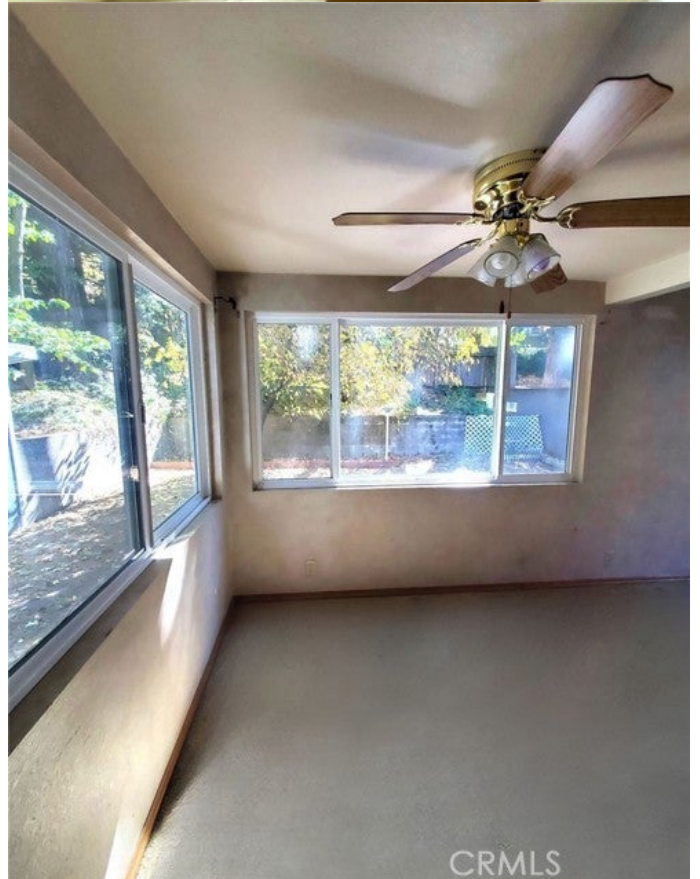
MLS® #SW23225933

\$325,000

5 Bedroom, 2.00 Bathroom, 1,704 sqft
Residential on 0 Acres

N/A, Crestline, CA

Welcome To Your Dream Mountain Home In The Highly Desirable Crestline! This Charming Home Offers Abundant Potential, With 5 Bedrooms, 2 Bathrooms, And A Spacious 2,226 Sqft Of Living Space. As You Arrive, You'll Be Greeted By The Convenience Of High Demand Level Parking, Making It A Breeze For Your Family And Guests To Come And Go. No More Worries About Steep Driveways Or Limited Parking Spaces! And For Added Convenience, A Single Car Garage Is Attached. The Possibilities Are Endless With This Property, Allowing You To Put Your Creative Touch And Personal Style Into Transforming It Into The Perfect Dream Home. Utilize The Ample Space To Design Your Ideal Living, Dining, And Entertaining Areas, Providing A Comfortable And Inviting Atmosphere For Family And Friends. Escape The Hustle And Bustle Of The City And Immerse Yourself In The Tranquility And Beauty Of The Surrounding Mountain Views. Imagine Waking Up To Breathtaking Vistas And Enjoying The Crisp Mountain Air From The Comfort Of Your Own Backyard. With Endless Outdoor Recreational Activities At Your Doorstep, Including Hiking, Skiing, And Boating, This Home Is An Outdoor Enthusiast's Paradise. Located In The Sought-After Crestline Community, You'll Enjoy The Peace And Serenity Of Mountain Living While Still Being Close To All Amenities. Take A Short Drive To The Charming Town Center, Where You Can Explore Local Shops,



Indulge In Delicious Dining Options, And
Immerse Yourself In The Vibrant Community
Atmosphere. Don't Miss This Incredible
Opportunity To Create Your Perfect Mountain
Retreat. With Its Prime Location, Abun

Built in 1930

Additional Information

| | |
|--------------|-------------------|
| City | Crestline |
| County | San Bernardino |
| Zip | 92325 |
| MLS® # | SW23225933 |
| Bedrooms | 5 |
| Bathrooms | 2 |
| Square Ft | 1,704 |
| Lot Size | 0.14 |
| Neighborhood | CRESTLINE (92325) |
| Garages | 1 |

Listing Details

Provided By: MVP Real Estate & Investments

This information is deemed reliable but not guaranteed. You should rely on this information only to decide whether or not to further investigate a particular property. BEFORE MAKING ANY OTHER DECISION, YOU SHOULD PERSONALLY INVESTIGATE THE FACTS (e.g. square footage and lot size) with the assistance of an appropriate professional. You may use this information only to identify properties you may be interested in investigating further. All uses except for personal, non-commercial use in accordance with the foregoing purpose are prohibited. Redistribution or copying of this information, any photographs or video tours is strictly prohibited. This information is derived from the Internet Data Exchange (IDX) service provided by San Diego MLS®. Displayed property listings may be held by a brokerage firm other than the broker and/or agent responsible for this display. The information and any photographs and video tours and the compilation from which they are derived is protected by copyright. Compilation © 2024 San Diego MLS®, Inc. Listing information last updated on May 17th, 2024 at 5:28am PDT