

\$549,990 - 45012 Malia Court, Lancaster

MLS® #SW23228142

\$549,990

3 Bedroom, 2.00 Bathroom, 1,925 sqft
Residential on 0 Acres

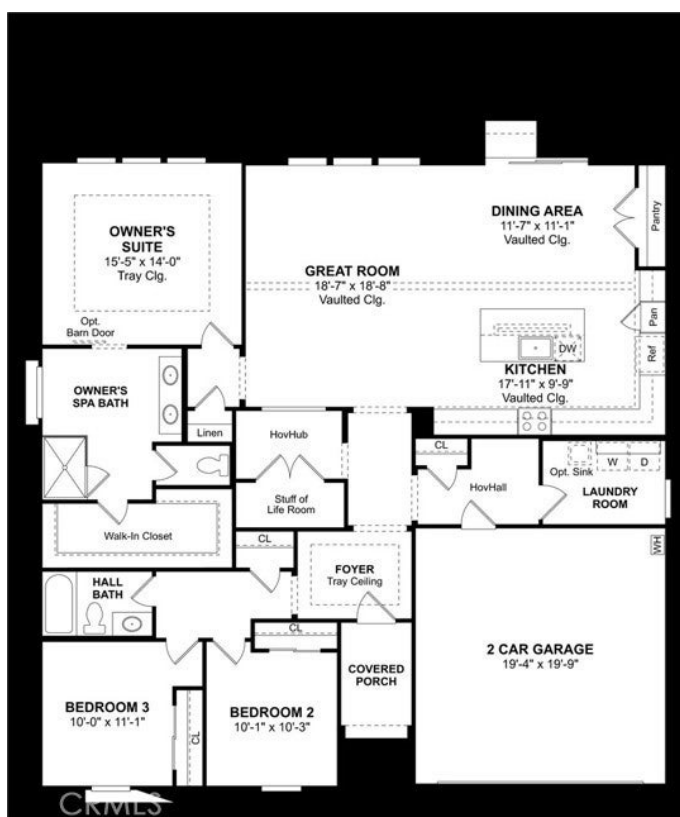
Westview Estates, Lancaster, CA

This home is our popular Aberdeen plan located in West View Estates, a beautiful single-story neighborhood, by K. Hovnanian Homes. Ready for Immediate Move-in, this spacious 3 bed, 2 bath, 2 car garage home features our 'Loft Look' interior design finishes. Curated selections include shaker style cabinets throughout, large kitchen island, Quartz counters in the kitchen and baths, stainless steel appliances, luxury vinyl plank flooring, tile flooring in the bathrooms, tankless water heater and more. This home also includes washer, dryer, and refrigerator! This is a must-see community! ***Prices subject to change, all photos are of the model home actual home will vary. *****Possible Rate Buy-Down programs available when choosing Sellers preferred lender. **

Built in 2023

Additional Information

City	Lancaster
County	Los Angeles
Zip	93561
MLS® #	SW23228142
Bedrooms	3
Bathrooms	2
Square Ft	1,925
Lot Size	0.18
Neighborhood	TEHACHAPI (93561)



Listing Details

Provided By: K. Hovnanian Companies of CA

This information is deemed reliable but not guaranteed. You should rely on this information only to decide whether or not to further investigate a particular property. BEFORE MAKING ANY OTHER DECISION, YOU SHOULD PERSONALLY INVESTIGATE THE FACTS (e.g. square footage and lot size) with the assistance of an appropriate professional. You may use this information only to identify properties you may be interested in investigating further. All uses except for personal, non-commercial use in accordance with the foregoing purpose are prohibited. Redistribution or copying of this information, any photographs or video tours is strictly prohibited. This information is derived from the Internet Data Exchange (IDX) service provided by San Diego MLS®. Displayed property listings may be held by a brokerage firm other than the broker and/or agent responsible for this display. The information and any photographs and video tours and the compilation from which they are derived is protected by copyright. Compilation © 2024 San Diego MLS®, Inc. Listing information last updated on May 15th, 2024 at 7:01pm PDT