

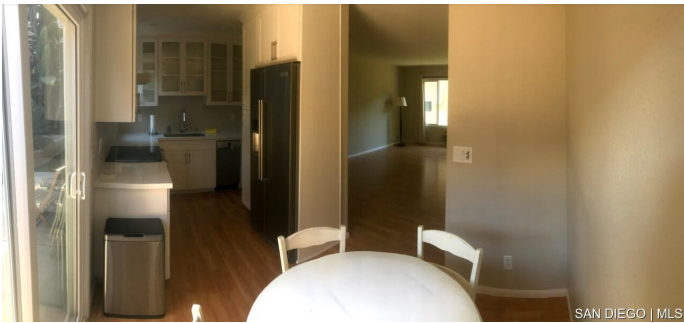
# \$570,000 - 4560 Maple Ave Unit 123, LA MESA

MLS® #SDC0000776

**\$570,000**

2 Bedroom, 2.00 Bathroom, 905 sqft  
Residential on 3 Acres

Westwood Village, LA MESA, CA



Built in 1969

## Additional Information

City	LA MESA
County	San Diego
Zip	91941
MLS® #	SDC0000776
Bedrooms	2
Bathrooms	2
Square Ft	905
Lot Size	2.56
Neighborhood	LA MESA (91941)

## Listing Details

Provided By: Coldwell Banker Royal Realty

This information is deemed reliable but not guaranteed. You should rely on this information only to decide whether or not to further investigate a particular property. BEFORE MAKING ANY OTHER DECISION, YOU SHOULD PERSONALLY INVESTIGATE THE FACTS (e.g. square footage and lot size) with the assistance of an appropriate professional. You may use this information only to identify properties you may be interested in investigating further. All uses except for personal, non-commercial use in accordance with the foregoing purpose are prohibited. Redistribution or copying of this information, any photographs or video tours is strictly prohibited. This information is derived from the Internet Data Exchange (IDX) service provided by San Diego MLS®. Displayed property listings may be held by a brokerage firm other than the broker and/or agent responsible for this display. The information and any photographs and video tours and the compilation from which they are derived is protected by copyright. Compilation © 2024 San Diego MLS®, Inc. Listing information last updated on May 16th, 2024 at 10:31pm PDT