

# \$4,000 - 1584 Wallace Avenue, San Francisco

MLS® #423917172

**\$4,000**

0 Bedroom, 0.00 Bathroom, 1,766 sqft

Commercial Lease on 0 Acres

Bayview, San Francisco, CA

Rare opportunity to lease a newly renovated industrial space located at 1584 Wallace Avenue, in the Bayview District of San Francisco. 1584 Wallace Avenue consists of 1,766 square feet of warehouse space with a 10 foot roll up door, and includes two dedicated parking spaces in a gated and secured lot. Zoning: PDR-1-B

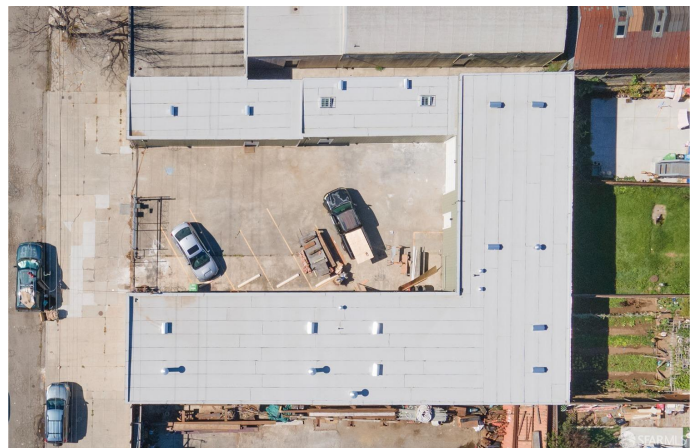
Built in 1975

## Essential Information

MLS® #	423917172
Price	\$4,000
Bathrooms	0.00
Square Footage	1,766
Acres	0.17
Year Built	1975
Type	Commercial Lease
Sub-Type	Industrial
Status	Active

## Community Information

Address	1584 Wallace Avenue
Area	SF District 10
Subdivision	Bayview
City	San Francisco
County	San Francisco
State	CA
Zip Code	94124



**Amenities**

Parking Spaces	2
Parking	Enclosed, Secured

**Exterior**

Lot Description	Airport Nearby, Freeway Nearby, Industrial Area, Light Rail Nearby, Near Public Transit
-----------------	---

**Additional Information**

Date Listed	October 16th, 2023
-------------	--------------------

**Listing Details**

Listing Agent	Davis Nguyen
Provided By:	Compass Commercial

© Copyright 2024 of the SFAR MLS. Listings on this page identified as belonging to another listing firm are based upon data obtained from the SFAR MLS, which data is copyrighted by the San Francisco Association of REALTORS®, but is not warranted. Information being provided is for consumers' personal, noncommercial use and may not be used for any purpose other than to identify prospective properties consumers may be interested in purchasing.