

\$3,695,000 - 280 Spear Street 38a, San Francisco

MLS® #424000395

\$3,695,000

3 Bedroom, 3.00 Bathroom, 2,123 sqft
Residential on 1 Acres

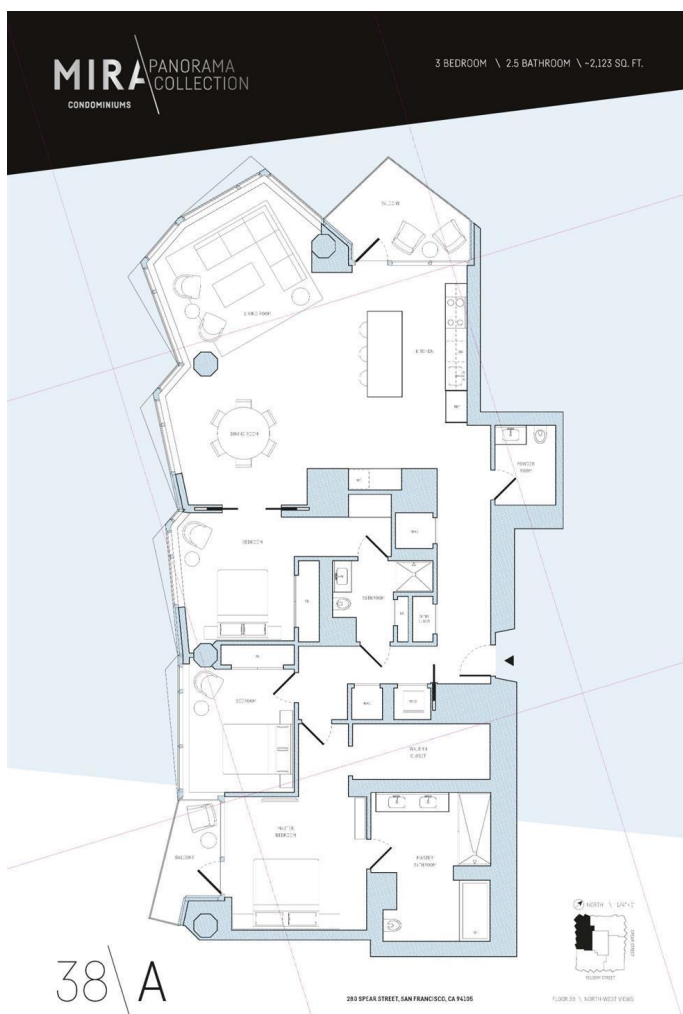
South Beach, San Francisco, CA

MIRA's Panorama Collection, an exclusive selection of homes on the top five floors of the 40-floor, spiraling tower, is comprised of luxury three-bedroom, three-bathroom condominium residences with expansive City and bay views, high ceilings, spacious floor plans, elevated finishes, and top-of-the-line appliances. frenchCALIFORNIA's luxury model residence for this collection of homes is inspired by an Italian aesthetic and lifestyle, drawing on high-end European styles to create a space that evokes the Modern Italian Dolce Vita." Homes in MIRA's Panorama Collection feature larger bay windows than comparable homes on lower floors, offering sweeping views of San Francisco Bay, the Bay Bridge, and the City skyline. Ceilings are 10 to 12 feet high and floor plans range from approximately 2,100 to 2,500 square feet.

Built in 2022

Essential Information

MLS® #	424000395
Price	\$3,695,000
Bedrooms	3
Bathrooms	3.00
Full Baths	2
Half Baths	1
Square Footage	2,123
Acres	1.10



Year Built	2022
Type	Residential
Sub-Type	Condominium
Style	Modern/High Tech
Status	Active

Community Information

Address	280 Spear Street 38a
Area	SF District 9
Subdivision	South Beach
City	San Francisco
County	San Francisco
State	CA
Zip Code	94105

Amenities

Parking Spaces	1
Parking	Valet, Independent, On Site
View	Bay, City, City Lights, Downtown, Mountain(s)

Interior

Appliances	Dishwasher, Disposal, Double Oven, ENERGY STAR Qualified Appliances, Gas Cooktop, Range Hood, Ice Maker, Microwave, Self Cleaning Oven, Warming Drawer, Wine Refrigerator, Dryer, Washer
Heating	Heat Pump
Cooling	Central Air, Heat Pump
Stories	One

Exterior

Exterior Features	Balcony
Construction	Concrete
Foundation	Concrete, Slab

Additional Information

Date Listed	January 3rd, 2024
-------------	-------------------

Listing Details

Listing Agent	Garrett R Frakes
Provided By:	Polaris Pacific

data obtained from the SFAR MLS, which data is copyrighted by the San Francisco Association of REALTORS®, but is not warranted. Information being provided is for consumers' personal, noncommercial use and may not be used for any purpose other than to identify prospective properties consumers may be interested in purchasing.