

# \$1,548,000 - 30 Topaz Way, San Francisco

MLS® #424003365

**\$1,548,000**

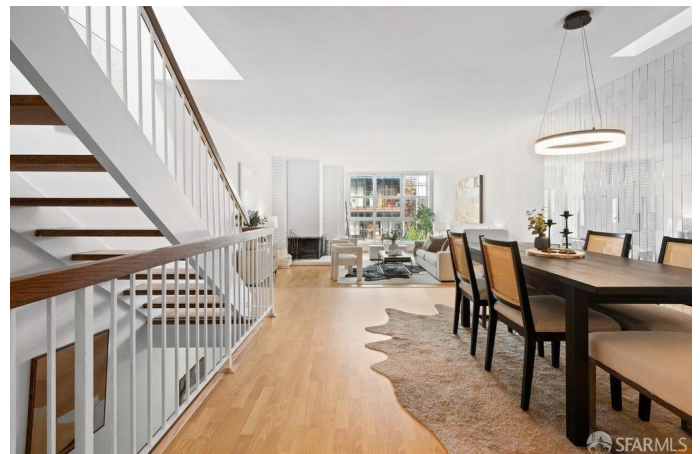
3 Bedroom, 3.00 Bathroom, 1,868 sqft  
Residential on 0 Acres

Diamond Heights, San Francisco, CA

Welcome to the epitome of luxurious city living in Diamond Heights! This stunning 3-bedroom, 2.5-bathroom condo combines the comfort of a single-family home with the convenience of urban living, all while boasting captivating views of downtown San Francisco. Adding to its allure, this residence includes a rare and coveted feature - a private two-car garage. Step into an expansive living space that seamlessly flows from the stylish living room to the private backyard, ideal for both relaxation and entertaining. The open-concept design connects the living area to the dining space and a modern, gourmet kitchen adorned with brand new appliances and exquisite finishes. The three well-appointed bedrooms provide ample space and comfort, with the primary bedroom featuring a private ensuite bathroom. Large windows throughout frame breathtaking panoramic views of the iconic downtown skyline and bay, creating a picturesque backdrop for your everyday life. Situated in the sought-after Diamond Heights neighborhood, you'll enjoy proximity to parks, shopping, dining, and the ease of commuting with accessible public transportation options. Don't miss the chance to make this exquisite 3-bedroom, 2.5-bathroom condo with a single-family feel and downtown views your new home.

Built in 1968

## Essential Information



|                |             |
|----------------|-------------|
| MLS® #         | 424003365   |
| Price          | \$1,548,000 |
| Bedrooms       | 3           |
| Bathrooms      | 3.00        |
| Full Baths     | 2           |
| Half Baths     | 1           |
| Square Footage | 1,868       |
| Acres          | 0.04        |
| Year Built     | 1968        |
| Type           | Residential |
| Sub-Type       | Condominium |
| Status         | Active      |

### Community Information

|             |                 |
|-------------|-----------------|
| Address     | 30 Topaz Way    |
| Area        | SF District 4   |
| Subdivision | Diamond Heights |
| City        | San Francisco   |
| County      | San Francisco   |
| State       | CA              |
| Zip Code    | 94131           |

### Amenities

|                |  |
|----------------|--|
| Parking Spaces | 2  |
| Parking        | Attached, Enclosed, Garage Faces Front, Interior Access, Tandem, On Site |
| View           | Bay, City, Downtown, Sutro Tower   |

### Interior

|                   |   |
|-------------------|---|
| Interior Features | Atrium, Kitchen, Living Room, Storage   |
| Appliances        | Dishwasher, Disposal, Free-Standing Electric Range, Free-Standing Refrigerator, Microwave, Dryer, Washer, Washer/Dryer Stacked Included |
| Heating           | Central   |
| Stories           | Three Or More   |

### Additional Information

|             |                    |
|-------------|--------------------|
| Date Listed | January 18th, 2024 |
|-------------|--------------------|

### Listing Details

|               |                  |
|---------------|------------------|
| Listing Agent | Jasmine Fletcher |
|---------------|------------------|

Provided By:           Compass

© Copyright 2024 of the SFAR MLS. Listings on this page identified as belonging to another listing firm are based upon data obtained from the SFAR MLS, which data is copyrighted by the San Francisco Association of REALTORS®, but is not warranted. Information being provided is for consumers' personal, noncommercial use and may not be used for any purpose other than to identify prospective properties consumers may be interested in purchasing.