

\$6,250 - 338 Main Street 11e, San Francisco

MLS® #424020414

\$6,250

2 Bedroom, 2.00 Bathroom, 1,382 sqft
Residential Lease on 2 Acres

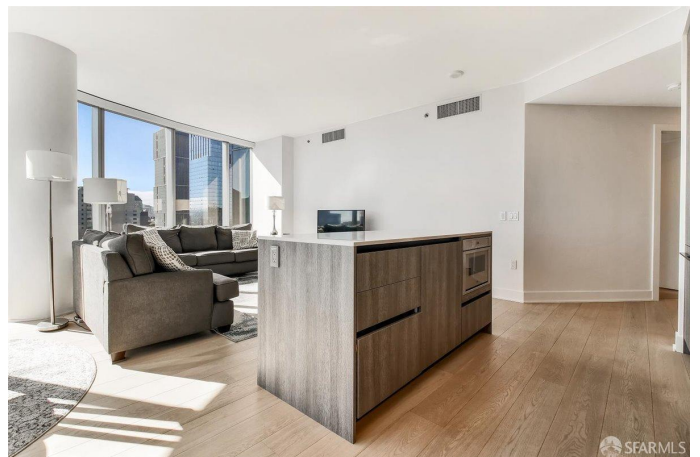
South Beach, San Francisco, CA

Spacious corner 2 Bed, 2 Bath at LUMINA with Bay Bridge views from the private balcony. The condo offers wide-open space and wall-to-wall curved window lines in the living and dining room, expensive hardwood floors that spread throughout. The unit features an open floor plan, motorized shades, Siematic cabinetry, Caesarstone Quartz countertops, Gaggenau appliances, European porcelain tiles, and Maax soaking tub in the spa-like bathroom. Designed by Bernardo Fort-Brescia of Arquitectonica, LUMINA offers residents world-class amenities such as a full-length saline lap pool, a 7,000 sq. ft. state-of-the-art gym, landscaped outdoor spaces, rooftop, valet parking, 24-hour door service front desk service. On the ground floor of LUMINA, Woodlands Market offers organic and natural products from local suppliers, prepared foods, and a coffee bar. Just a short walk to Embarcadero, Oracle Park, and Ferry Building, as well as world-class restaurants, coffee shops, Farmers Market, and The Warriors stadium.

Built in 2016

Essential Information

MLS® #	424020414
Price	\$6,250
Bedrooms	2
Bathrooms	2.00



Full Baths	2
Square Footage	1,382
Acres	1.73
Year Built	2016
Type	Residential Lease
Sub-Type	Condominium
Style	Modern/High Tech
Status	Active

Community Information

Address	338 Main Street 11e
Area	SF District 9
Subdivision	South Beach
City	San Francisco
County	San Francisco
State	CA
Zip Code	94105

Amenities

Parking Spaces	1
Parking	Valet, Side by Side, Yes, On Site
View	Bay, Bridge(s), City, City Lights
Has Pool	Yes
Pool	Community, Indoor, Lap

Interior

Appliances	Dishwasher, Disposal, Ice Maker, Washer/Dryer Stacked Included
Heating	Central
Cooling	Central Air
# of Stories	1

Additional Information

Date Listed	April 2nd, 2024
-------------	-----------------

Listing Details

Listing Agent	Milan Jezdimirovic
Provided By:	Compass

© Copyright 2024 of the SFAR MLS. Listings on this page identified as belonging to another listing firm are based upon data obtained from the SFAR MLS, which data is copyrighted by the San Francisco Association of REALTORS®, but is not warranted. Information being provided is for consumers' personal, noncommercial use and may not be used for any

purpose other than to identify prospective properties consumers may be interested in purchasing.